

# **The Bio21 Stage 2B Project**



## **Community Engagement and Information Session**

**Monday 27 April 2015**

**7-8pm**

**Bio21 Institute Auditorium**

Welcome and introductions (*3 mins*)

Bio21 Stage 2B Development Project

- Background and Vision (*5 mins*)
- Planning and Design Concepts (*10 mins*)
- Construction Program and Proposed Timeline (*5 mins*)

Question and Answer Session including previous feedback (*30 mins*)

Consultation and Feedback program (*4 mins*)

Contacts and further information (*3 mins*)



"...a health and research precinct of national significance and part of the state government framework for the Parkville Employment Precinct" that will increase the number of knowledge jobs and improve the ability of knowledge-based businesses to leverage off their export and innovation potential'. (Plan Melbourne report)

THE EVOLUTION STARTS HERE

**“To improve human health and the environment through innovation in molecular science and biotechnology driven by multidisciplinary research and industry engagement”**

## Key Elements:

- I**nterdisciplinary research
- P**latform technologies
- E**ducation, training and outreach
- I**ndustry engagement

**~570 members (38 research groups; ~ 65% future generation scientists; ~ 100 Industry)**



**Bio21 Institute Atrium – the Institute was officially opened in 2005**

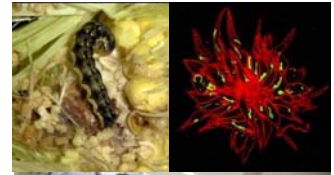
THE EVOLUTION STARTS HERE

### Tackling a spectrum of societies challenges:

- Diseases & illnesses: infectious diseases, cancer, diabetes, neurodegenerative, oral health
- Food security: improved crops; insecticide resistance; dairy innovations
- Environmental: solar cells; water pollution
- Nanoscience: nanomaterials for targeted drug delivery

### Key Achievements:

- Diagnostic blood test developed for early onset Alzheimers
- new drugs for kidney disease/diabetes (sold to Shire Pharma for \$US75m)
- Part of the Australian Dairy Innovation Hub for dairy manufacturing and food processing
- Partner in the Elizabeth Blackburn School of Sciences



THE EVOLUTION STARTS HERE

The Bio21 Plan included:

- Stage 1 – Bio21 Institute David Penington Building (opened in 2005)
- Stage 2A – Elizabeth Blackburn School of Sciences (opened in 2014)
- **Stage 2B – proposed new facility**

**Bio21 Stage 2B: A new facility that expands the Bio21 Institute's multidisciplinary research, training and industry engagement activities**

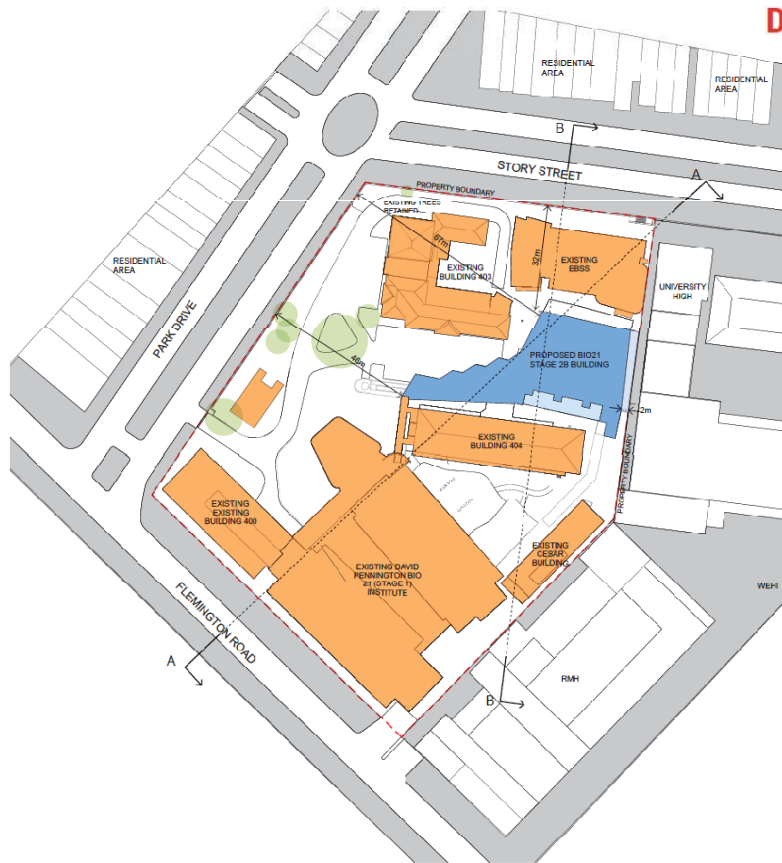
**Bio21 Stage 2B will :**

- expand capacity in computational biology and precision medicine
- facilitate the Institute's 'school to bench to workplace' vision
- accommodate university researchers, students and industry scientists
- Increase collaborative opportunities for increased collaboration and sharing

### The proposed new facility

- Located on the eastern perimeter of the site behind the Elizabeth Blackburn School of Sciences
- 4 storey research lab and office facility with services tunnel from Flemington Rd
- Approximately 4300sqm
- Includes research labs and office space, shared meeting rooms and tea room
- Accommodate approx 140 scientists and students
- 5 star Green Star rating





The University of Melbourne Bio21 Stage 2B

Site Plan Stage 2B

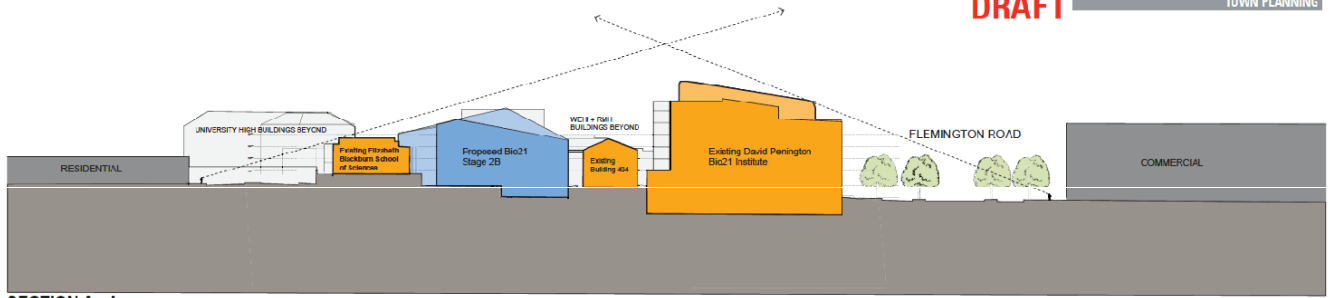
1:1000 @ A3 | TP.001 Rev: / | 22.04.2015



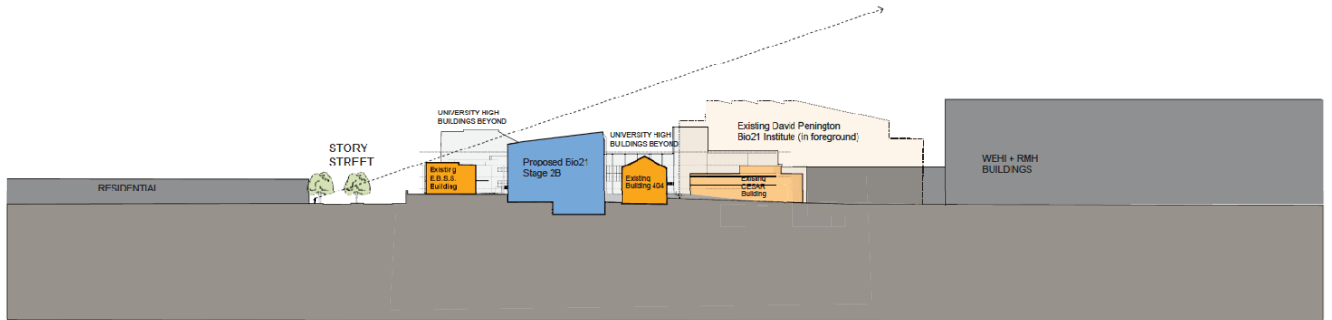
© Copyright DesignInc. Copyright in this document and the concepts it represents are reserved to DesignInc. The economic use or copying permitted. All rights reserved. Some of the incorporated images and concepts might be subject to third party copyright and/or moral rights.







SECTION A - A



SECTION B - B



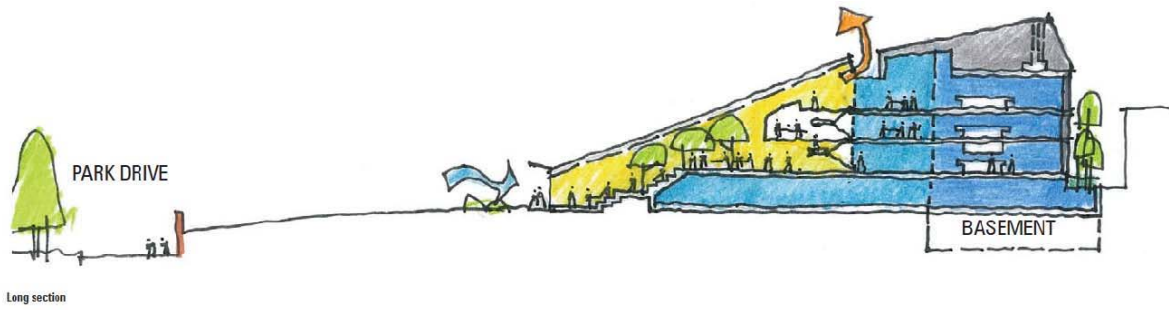
The University of Melbourne Bio21 Stage 2B

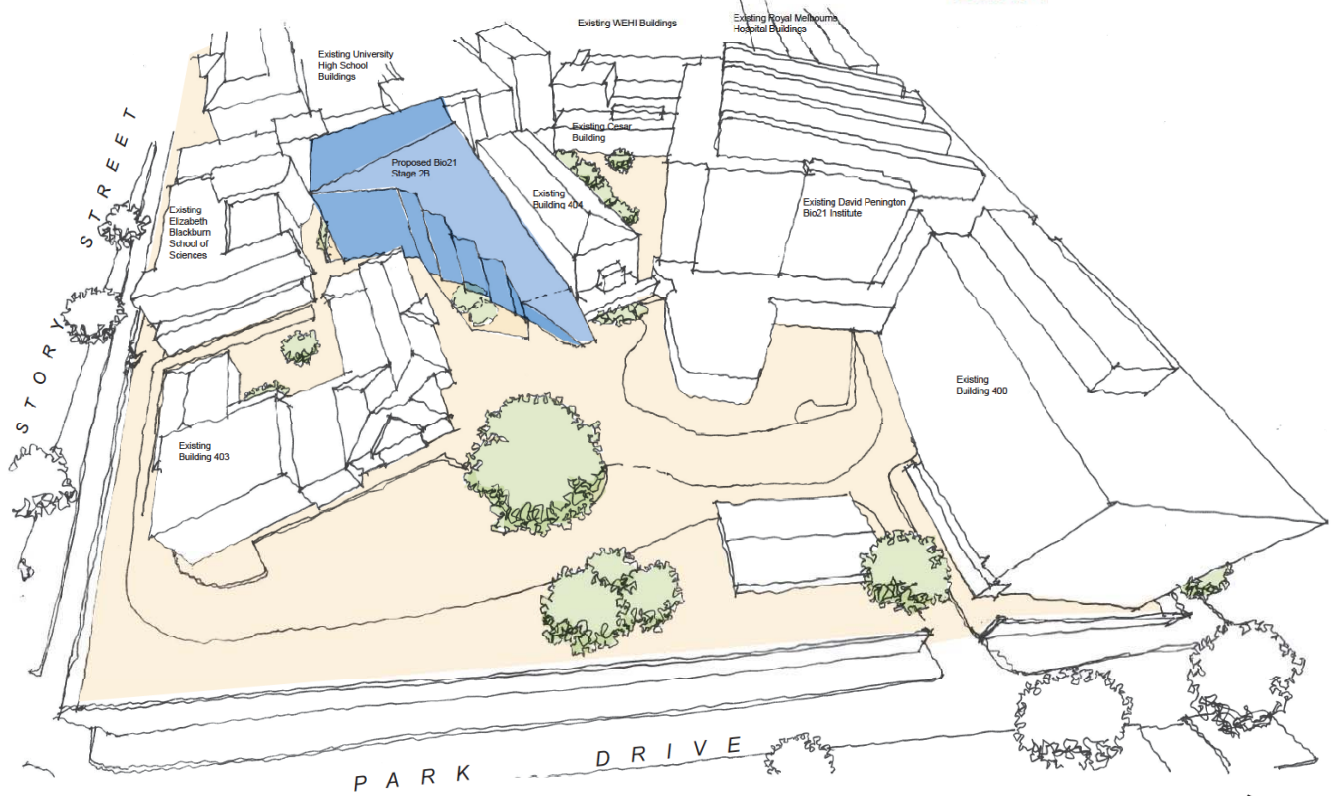
Site Sections A - A, B - B

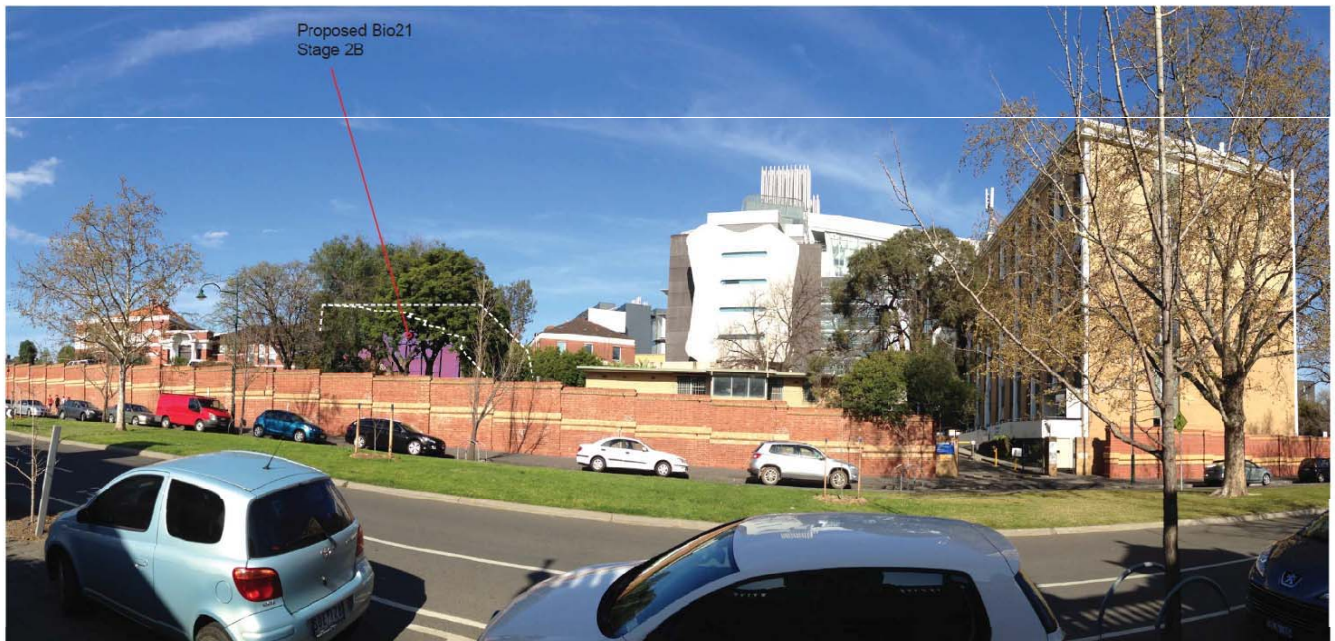
1:1000 @ A3 | TP: 002 Rev: / | 22.04.2015



© Copyright DesignInc. Copyright in this document and the concepts it represents are reserved to DesignInc. No authorized use or copying permitted. All rights reserved. Some of the incorporated images and concepts might be subject to third party copyright and/or moral rights.







The University of Melbourne Bio21 Stage 2B

Photomontage View From Park Drive  
Looking West

nts @ A3 | TP. 005 Rev: / | 22.04.2015



© Copyright DesignInc. Copyright in this document and the concepts it represents are reserved to DesignInc. No authorized use or copying permitted. All rights reserved. Some of the incorporated images and concepts may be subject to third party copyright and/or moral rights.



Proposed Bio21  
Stage 2B



The University of Melbourne Bio21 Stage 2B

Photomontage View From Corner Park  
Drive & Story Street Looking South-East

nts @ A3 | TP. 004 Rev: / | 22.04.2015



© Copyright DesignInc. Copyright in this document and the concepts it represents are reserved to DesignInc. No further use or copying permitted. All rights reserved. Some of the incorporated images and concepts remain subject to third party copyright and/or moral rights.

From 29 April	Geotechnical boring for design information
June - July	Early works - Services relocation
From June to Nov	Early works - Tunnel construction
Late 2015	Main construction works to commence
2017	Practical completion



# **Addressing your feedback from previous projects**

## **Questions and Answers Session**

**Consultation and feedback period from  
28 April to 15 May 2015 (inclusive)**

**How can you submit your feedback?**

- **Online contact form via project website (from 28 April)** <http://www.stage2b.bio21.unimelb.edu.au/>
- **Email:** [bio21-stage2b@lists.unimelb.edu.au](mailto:bio21-stage2b@lists.unimelb.edu.au)

### **Bio21 Security – 24x7 Emergency and after hours**

**Tel: 834 42481**

**Enquiries, feedback and further info via online contact form on website**

**<http://www.stage2b.bio21.unimelb.edu.au/>**

